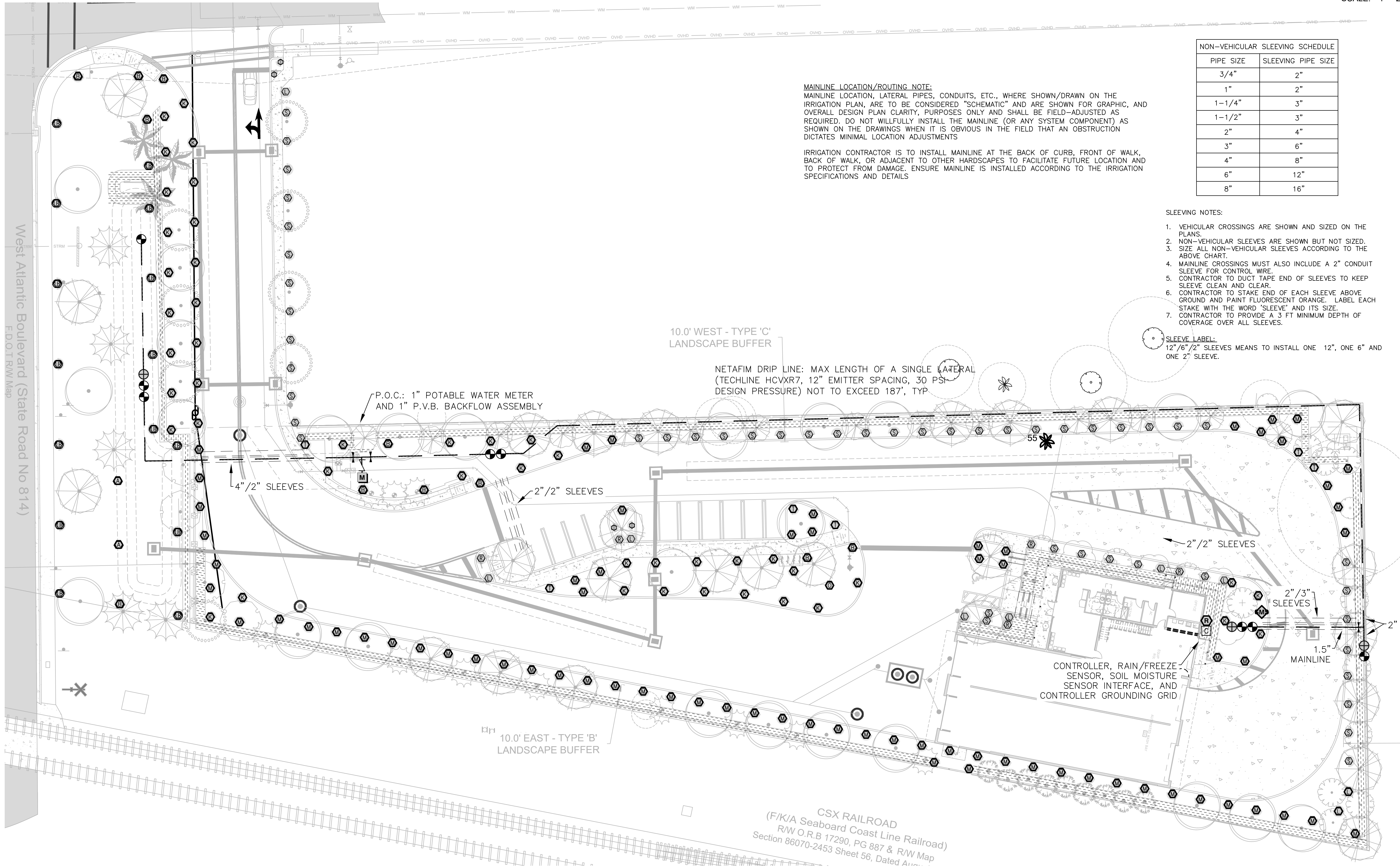


X:\Project Files Florida and Caribbean\Craven Thompson & Associates (CTA)\1501 W Atlantic_CTA-24781 (Atlantic Truck Wash)\Design\2025_0430 50% UPDATE\2025_0224_24-0055-IRR 50%.dwg [R-2] May 27, 2025 12:47pm TPILLIPS

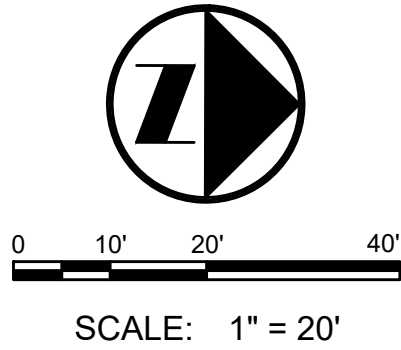


MAINLINE LOCATION/ROUTING NOTE:
MAINLINE LOCATION, LATERAL PIPES, CONDUITS, ETC., WHERE SHOWN/DRAWN ON THE IRRIGATION PLAN, ARE TO BE CONSIDERED "SCHEMATIC" AND ARE SHOWN FOR GRAPHIC, AND OVERALL DESIGN PLAN CLARITY, PURPOSES ONLY AND SHALL BE FIELD-ADJUSTED AS REQUIRED. DO NOT WILLFULLY INSTALL THE MAINLINE (OR ANY SYSTEM COMPONENT) AS SHOWN ON THE DRAWINGS WHEN IT IS OBVIOUS IN THE FIELD THAT AN OBSTRUCTION DICTATES MINIMAL LOCATION ADJUSTMENTS

IRRIGATION CONTRACTOR IS TO INSTALL MAINLINE AT THE BACK OF CURB, FRONT OF WALK, BACK OF WALK, OR ADJACENT TO OTHER HARDSCAPES TO FACILITATE FUTURE LOCATION AND TO PROTECT FROM DAMAGE. ENSURE MAINLINE IS INSTALLED ACCORDING TO THE IRRIGATION SPECIFICATIONS AND DETAILS

NON-VEHICULAR SLEEVING SCHEDULE	
PIPE SIZE	SLEEVING PIPE SIZE
3/4"	2"
1"	2"
1-1/4"	3"
1-1/2"	3"
2"	4"
3"	6"
4"	8"
6"	12"
8"	16"

- SLEEVING NOTES:**
- VEHICULAR CROSSINGS ARE SHOWN AND SIZED ON THE PLANS.
 - NON-VEHICULAR SLEEVES ARE SHOWN BUT NOT SIZED.
 - SIZE ALL NON-VEHICULAR SLEEVES ACCORDING TO THE ABOVE CHART.
 - MAINLINE CROSSINGS MUST ALSO INCLUDE A 2" CONDUIT SLEEVE FOR CONTROL WIRE
 - CONTRACTOR TO DUCT TAPE END OF SLEEVES TO KEEP SLEEVE CLEAN AND CLEAR.
 - CONTRACTOR TO STAKE END OF EACH SLEEVE ABOVE GROUND AND PAINT FLUORESCENT ORANGE. LABEL EACH STAKE WITH THE WORD 'SLEEVE' AND ITS SIZE.
 - CONTRACTOR TO PROVIDE A 3 FT MINIMUM DEPTH OF COVERAGE OVER ALL SLEEVES.
- SLEEVE LABEL:**
12"/6"/2" SLEEVES MEANS TO INSTALL ONE 12", ONE 6" AND ONE 2" SLEEVE.



CRAVEN - THOMPSON AND ASSOCIATES, INC.
ENGINEERS • PLANNERS • SURVEYORS
3563 N.W. 53RD STREET, FORT LAUDERDALE, FLORIDA 33309
TEL: (954) 739-6409
FAX: (954) 739-6409
FLORIDA LICENSED ENGINEERS, SURVEYORS & PLANNERS BUSINESS NO. 271
FLORIDA LICENSED LANDSCAPE ARCHITECTURE BUSINESS NO. C000114

MATERIAL SHOWN HEREIN IS THE PROPERTY OF CRAVEN THOMPSON & ASSOCIATES, INC. AND SHALL NOT BE REPRODUCED OR TRANSMITTED IN ANY FORM OR BY ANY MEANS, ELECTRONIC OR MECHANICAL, INCLUDING PHOTOCOPYING, RECORDING, OR BY ANY INFORMATION STORAGE AND RETRIEVAL SYSTEM, WITHOUT PERMISSION OF CRAVEN THOMPSON & ASSOCIATES, INC. COPYRIGHT © 2025

ATLANTIC FLEET WASH
1501 WEST ATLANTIC BLVD.
POMPANO BEACH, FLORIDA

PREPARED FOR:
KAJA PROPERTIES INC.

IRRIGATION PLAN - SHRUBS AND TURF

Nicole D. Pastre
Florida R.L.A. No. 6667397
2025-05-27

PROJECT NO.
24-0055-001-01

IR-2
SHEET 2 OF 6

AAC

PZ24-12000026

08.20.2025

